

# *Stout* FENT

## Deck and Platform Guide




**At Stout Tent, we take pride in the durability and stability of our tents, which are designed to be **staked into the ground for optimal performance.****

**That said, we understand the appeal of a deck setup, and so we've created this guide to offer you some tried-and-true tips for success. However, if you are in need of a detailed deck building plan, we recommend heading over to Etsy and purchasing a plan from @HazyWoodsDesign. They have a variety of robust deck plans at very affordable prices.**

**[HazyWoodsDesign](#)**

**Good luck and happy building!**



It's important to know that a deck is not required for a successful long-term setup and sometimes it can actually cause (different) problems!

Here's a list of the Pros and Cons to a deck or platform setup for your tent.

# PROS

- ✓ Prevents animals from burrowing under your tent.
- ✓ Prevents mud splashing up on tent when it rains
- ✓ Prevents flooding
- ✓ Can provide additional insulation, either keeping the tent off a cold ground, or allowing for more air flow.
- ✓ Not as much dirt tracking inside the tent
- ✓ Provides ambiance, aesthetically pleasing

# CONS

- ✗ Can stress the seams and canvas
- ✗ Less 'give' on a non-moving structure
- ✗ Slightly less wind resistant because of higher profile, and lack of ground anchors
- ✗ Can be expensive to build
- ✗ Less flexibility to move your tent(s) to different spots on your property to adjust for weather or other environmental factors

## THERE ARE THREE GENERAL SHAPES IN BELL TENT DECKS AND PLATFORMS:

1) **Polygon**

2) **Square** (16'4" tent footprint + 4'-4'6" for the guylines - as small as 20' x 20', which is referenced below at "Decks");

3) **Rectangular**, which creates a porch, sitting, or staging area in front for a cozy glamping feel (this footprint has been so popular in South Africa over the decades it is sometimes referred to as "South African-style").

**Decks:** You can go as small as a 20' x 20' platform or deck, but you'll want to make a connection point for the guylines up higher (we've used 3/4" pipe anchored to the deck, and then the lines can connect directly to that). We recommend this so that the guylines aren't anchored down with too much force. On a 20' x 20' deck, you risk having too much downward tension and too little horizontal tension.

The larger the deck, the farther the guylines can extend, so the less height you need to add on the poles that the guylines connect to. We have a client who uses a small deck, and they use a PVC at the top of their pole, and put a piece of high-density foam on top so that there is more "give" since they can't do the proper line extension.

Our norm has been for rebar braced on the deck side and a hook used for the groundsheet loops - this configuration provides the necessary tension and toughness for a long-time.

# TENT UPGRADES TO CONSIDER

✓ We highly recommend using PVC center pole cap like this one from PVC Fittings Online.

✓ Canvas - If you're going to leave your tent set up on a semi permanent basis, make sure you're using the canvas best designed for long term use such as the Pro or the Overland Sunforger tent models. Check out our Choosing the Right Tent guide to be sure you're using the best tent for your specific environment and use case.

✓ Add a Sunshade or build a roof on your deck. UV rays will degrade the canvas over time, especially if you have your tent in direct sun exposure.





**THERE ARE MANY WAYS TO BUILD YOUR DECK OR PLATFORM, BUT THE DECKS THAT WE'VE SEEN HAVE THE MOST SUCCESS HAVE THESE THINGS IN COMMON:**

- ✓ **Anchor the A-frame (Don't skip those guy lines, you'll need them even more with a deck build since this is where the wind will meet resistance.)**
- ✓ **Hold the ropes up higher than ground-level (Keeping outward pressure, not just downward pressure.)**
- ✓ **Careful not to pull the ropes so high that you have water pooling on the seam connecting to the tent (we still want water run off).**

# CUSTOMER SUBMITTED PHOTOS OF DECKS



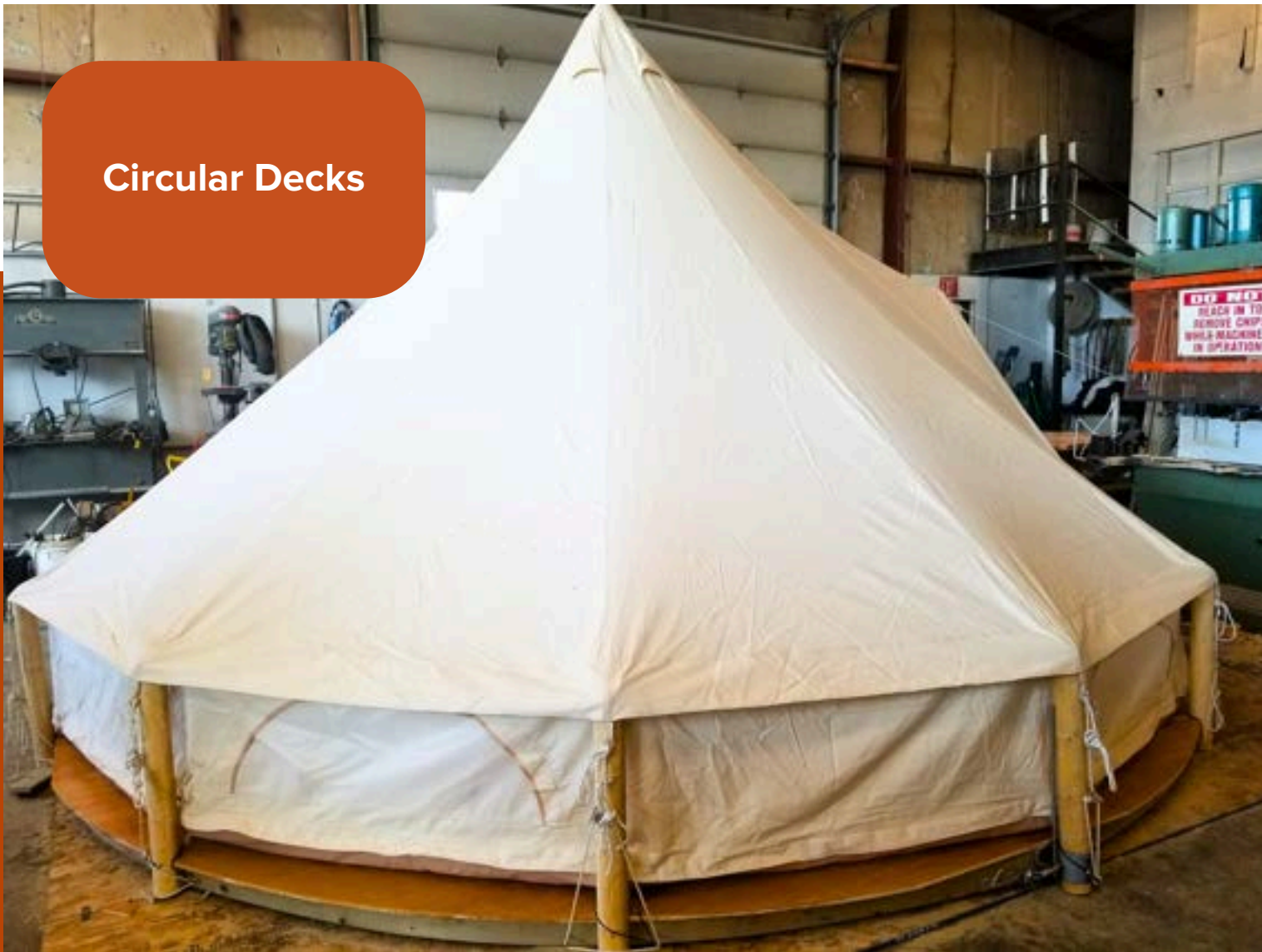


SoulPad Cotton Canvas Bell Tents

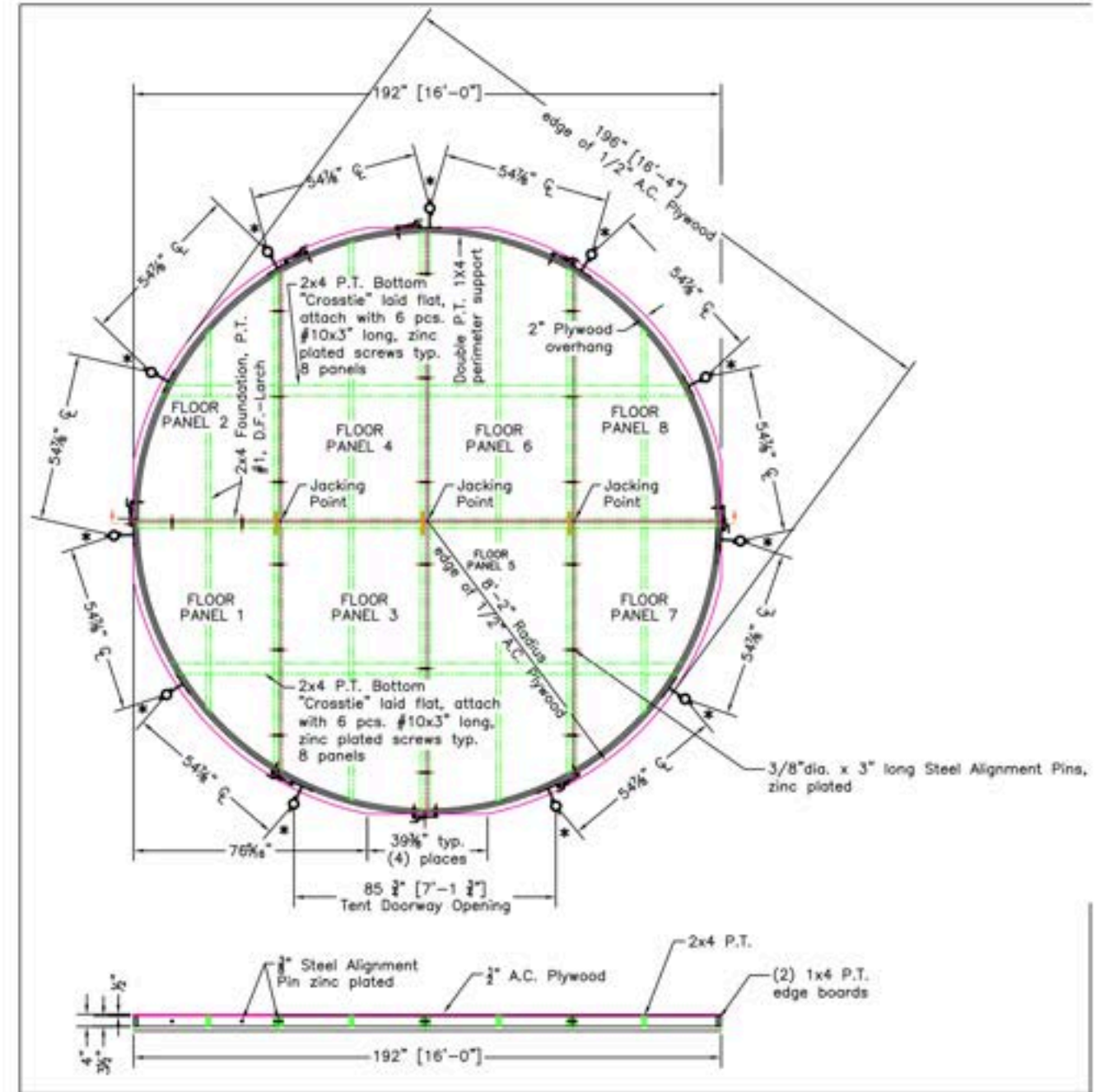
**Rectangular Decks**



Circular Decks



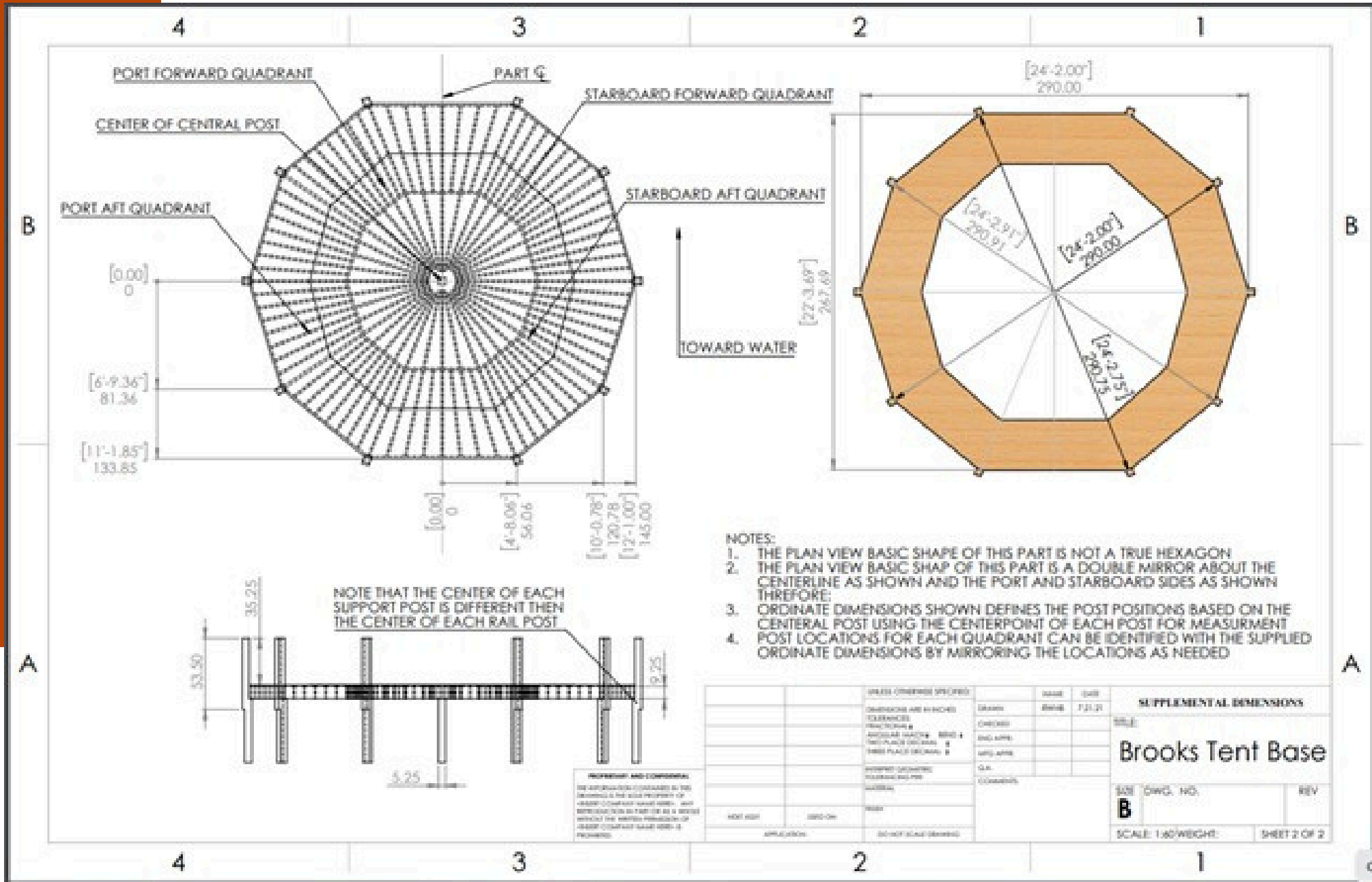
# Circular Decks



## Polygon Decks



# Polygon Decks





Wood Stakes





# Stout TENT

[www.stouttent.com](http://www.stouttent.com)

[info@stouttent.com](mailto:info@stouttent.com)

602.845.0609

