



A Quick OVERVIEW OF OUR TENTS

**ALL STOUT TENTS
ARE MADE WITH
100% COTTON
CANVAS.**

**ALL STOUT TENTS ARE CONICAL
OR
"SHAPED LIKE A BELL".**



**Bell tent (aka: Sibley tent) is
an adaptation to the Native
American tipi.**

**ALL STOUT TENTS HAVE
A SIMPLE CENTER POLE AND
A-FRAME DOOR DESIGN.**



@STOUTTENT

THEY COME IN THREE SIZES:

4M (13 FT)

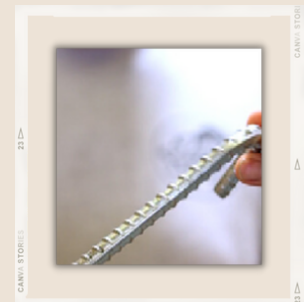
5M (16 FT)

6M (20 FT)



AND THEY ALL FEATURE:

- **100% natural, waterproof canvas**
- **Professional-grade thread & stitching**
- **Rip-stop, zip-in, PVC groundsheet-tub style**
- **24" sidewalls that roll up**
- **Double wall option - mesh wall for keeping bugs out when your sidewall is rolled up**
- **One center pole**
- **Large A-frame doorway with secondary mesh door**
- **Reflective guylines and metal sliders**
- **Rebar stakes**
- **Stainless steel D-rings that don't rust or break like grommets**
- **Power cord pass-throughs**



SO HOW ARE THEY DIFFERENT THEN?



TENT MODEL DIFFERENCES:

- 1. CANVAS THICKNESS(gsm)**
- 2. STOVE ACCESS**
- 3. FIRE PROOFING**

ULTIMATE

The Ultimate is our base model tent. It is made with a single-weave, 8.6 oz/ 280 gsm canvas. It is a tough tent, but at a recreational weight.

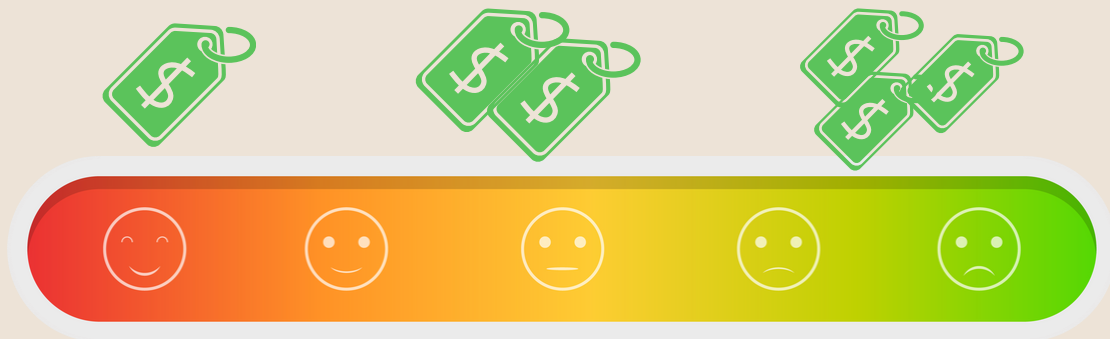
PRO

The Pro is made with a thicker, 10.06 oz/ 340 gsm canvas. The Pro comes with a built-in, 3-6 in, adjustable stovejack. It is fire resistant, and CPAI-84 compliant.

OVERLAND SUNFORGER

The Overland Sunforger is our most durable tent made with a double-weave, 10.10 oz./340 gsm canvas. The Sunforger comes with a built-in, 3-6 in, adjustable stovejack. It is fire resistant, and CPAI-84 compliant.

FROM DURABILITY and AFFORDABILITY IT GOES...



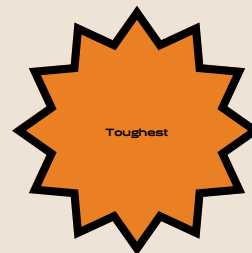
THE ULTIMATE



THE PRO



**THE OVERLAND
SUNFORGER**



WHAT SIZE TENT DO I NEED?



- 8 ft. 3 in. center pole
- 132 sq. ft. floor space
- 5 ft. entrance
- Fits 2 Twin, 1 queen
(sideways behind center pole)

- 9 ft. 9 in. center pole
- 212 sq. ft. floor space
- 5 ft. 6 in. entrance
- Fits 4 Twin,
2 Queen, and 1 King

- 11 ft. 4 in. center pole
- 300 sq. ft. floor space
- 6 ft. entrance
- Fits 6 Twin, 3 Queen,
2 King

GROUND SPACE:

Guylines extend 4 1/2 ft. beyond your groundsheet.



SINGLE WALL OR DOUBLE WALL?

1



"Single wall" refers to the 2 ft. high canvas sidewall that surrounds the perimeter of your tent. You can keep your canvas sidewall zipped tight to the tent floor like this (option 1):

2



"Single wall" refers to the 2 ft. high canvas sidewall that surrounds the perimeter of your tent. You can keep your canvas sidewall zipped tight to the tent floor like this (option 1):

3



MESH SIDEWALL

"Double wall" refers to the secondary mesh sidewall underneath your canvas sidewall. With double wall tents you have three sidewall options. You can leave both layers down (option 1), roll up both layers (option 2) or leave the mesh layer down and roll up the canvas layer (option 3) like this:



WANT TO KNOW MORE?

CHECK OUT:

"CHOOSING THE RIGHT TENT"

OR JUST HEAD OVER TO OUR SHOP!