

# TENT SERIES OVERVIEW

---

- THE ULTIMATE
- THE PRO
- THE OVERLAND  
SUNFORGER

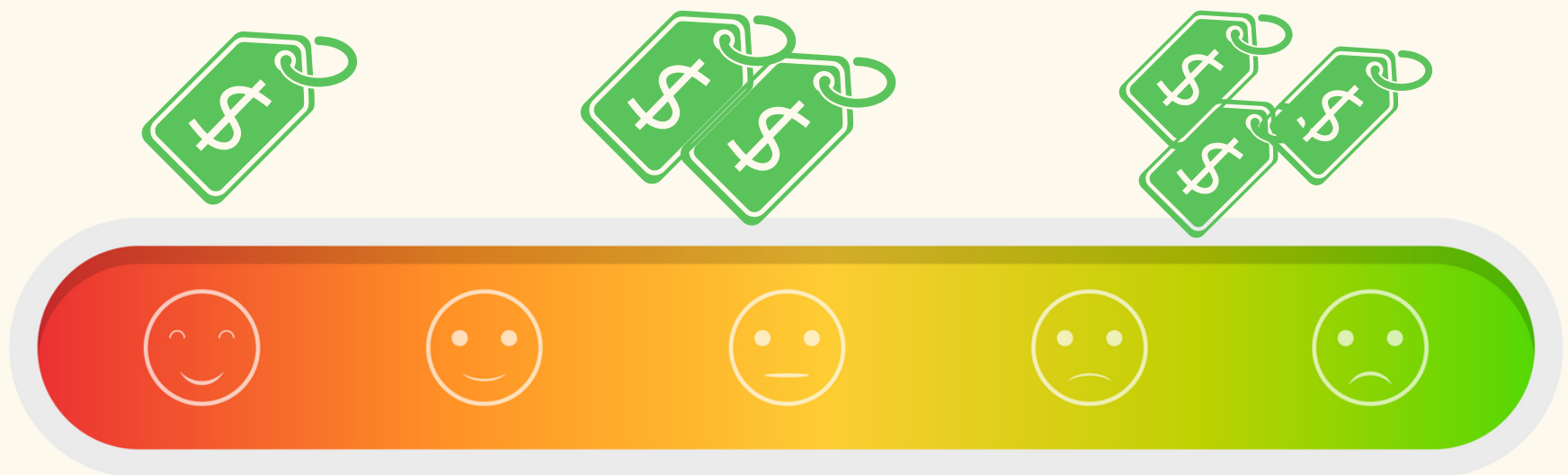


# ALL STOUT TENTS

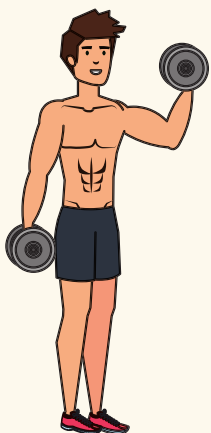
are awesome because they feature:

- **100% natural, waterproof canvas**
- **Professional-grade thread & stitching**
- **Rip-stop, zip-in, PVC groundsheet**
- **24" sidewalls that roll up**
- **Double wall option - mesh wall for keeping bugs out when your sidewall is rolled up**
- **One center pole**
- **Large A-frame doorway with secondary mesh door**
- **Reflective guylines and metal sliders**
- **Rebar stakes**
- **Stainless steel D-rings that don't rust or break like grommets**
- **Power cord pass-throughs**

# FROM DURABILITY TO AFFORDABILITY IT GOES...



**THE ULTIMATE**



**THE PRO**



**THE OVERLAND  
SUNFORGER**



## THE ULTIMATE

- **Best entry-level tent**
- **Single-weave canvas: 8.6-oz /285 gsm**
- **Available in 4M & 5M**
- **Tough tent, but at a recreational weight**
- **Not recommended for long-term use - lighter-weight canvas doesn't fair well with the cleaning and maintenance that a long term setup requires**
- **Popular with glampers, festival goers, party planners, backyard hosts, and professionals looking to level up their expo booths and presentations**



**Tough**

## THE PRO

- **Top-of-the-line, all-season tent**
- **Single-weave canvas; 10.06 oz./340 gsm**
- **Available in 4M, 5M, 6M, and 5M Pro Stargazer**
- **Better suited for long-term use- heavier canvas provides more coverage against the elements and is very resistant to UV rays**
- **Maintenance considerably easier than the Ultimate- canvas can take up to 70psi from a pressure washer**
- **Popular with pop-up event companies, vacation rental owners, and serious campers**
- **Comes with 3"-6" adjustable stove jack**
- **Fire retardant**
- **Double-door option (6M Pro and Stargazer)**



**Tougher**

## THE OVERLAND SUNFORGER

- **True basecamp tent**
- **Tight double-weave canvas: 10.10 oz./340 gsm**
- **Available in 5M**
- **Toughest tent- made with military-grade, duck canvas, entirely double-stitched, with triple reinforced pressure points, YKK #10 door zippers**
- **Well suited for long-term setups- double-weave canvas offers protection in high-humidity and high-moisture environments**
- **Thickest and heaviest canvas good for cleaning, but is less breathable than the single-weave used in our Ultimate and Pro series**
- **Popular with hunters, long-term commercial site owners, and anyone planning to brave nature's elements!**
- **Comes with 3 in.-6 in. adjustable stove jack**
- **Fire retardant**



**Toughest**

# NOTE WORTHY FACTS

- **The Ultimate Series is a great entry-level tent. It's affordable and sturdy.**
- **The Pro and The Overland Sunfoger series are fire retardant and come with a 3-6 in adjustable stove jack.**
- **The Pro Series comes in the most variations (Stargazer, 6M, Double Door). It is light weight, but still has the durability of a 4-season tent.**
- **The Overland Sunfoger is our true base-camp tent with double-weave stitching and YKK zippers.**



STILL NOT  
SURE WHAT  
TENT IS  
RIGHT FOR  
YOU?



Check out our "[Choosing the Right Tent](#)"  
guide for more info.

@STOUTTENT.COM