



Interested in a wood burning stove?
Wondering how this works?
Which stove to choose?

WOOD BURNING STOVE GUIDE



While we at Stout Tent do our best to educate customers to the best of our knowledge, when you use a woodstove inside your tent, you assume all responsibility for the safe use of the woodstove.

SHOULD I USE A WOOD BURNING STOVE IN MY TENT?

PROS:

- Portable
- Lasts forever
- Warm, dry heat
- Might be able to find fuel while camping
- No condensation

CONS:

- Learning curve (how to draft, picking the right kinds of wood)
- You may have to wake up to re-fuel

PRO TIP

You'll want 2 bags for an efficient stove on a weekend trip. Make sure your wood is very DRY, and cut the big pieces down to 6-12" pieces, the big stuff won't burn in a stove. Sometimes the wood sold at the parks isn't great - and you might be better off picking up wood from a local supplier on your way to camp.

Additional heating options:

[Here's a link to our Blog post about "Heating your Bell tent"](#)



WOODBURNER CHOICES

Which model is best for you?

STOVE	PRICE	FLUE SIZE	WEIGHT	HEAT OUTPUT
Anevay - Frontier	sold on Stout Tent \$250	3.15 inch	12 lbs	2.5 kw output - no firebox measurements
Anevay - Frontier Plus	sold on Stout Tent \$499	4 inch	34 lbs	3.5 kw output - 1800 cubic inch firebox
Winnerwell - Woodlander	sold on Stout Tent \$399	3.5 inch	30 lbs	1500 cubic inch firebox - no defined output measurement
Winnerwell - Nomad View	sold on Stout Tent \$449	3.5 inch	34 lbs	1500 cubic inch firebox - no defined output measurement
Four Dog Stove - DX Camp Stove	sold on fourdog.com \$400-480	5 inch	55 lbs	4268 cubic inch firebox - "Will heat up to a 14' x 16' wall tent at minus 30 below F"
Camp Chef	sold on sportsmans.com \$239	5 inch	74 lbs	5520 cubic inch firebox

- Typically woodburning stoves are between \$150 - \$400

VISUAL FEATURES

Windows: The Frontier Plus has a door window, so do the Winnerwell Woodlander, and The Nomad view also has a long viewing window for you to enjoy as well.



Frontier Plus



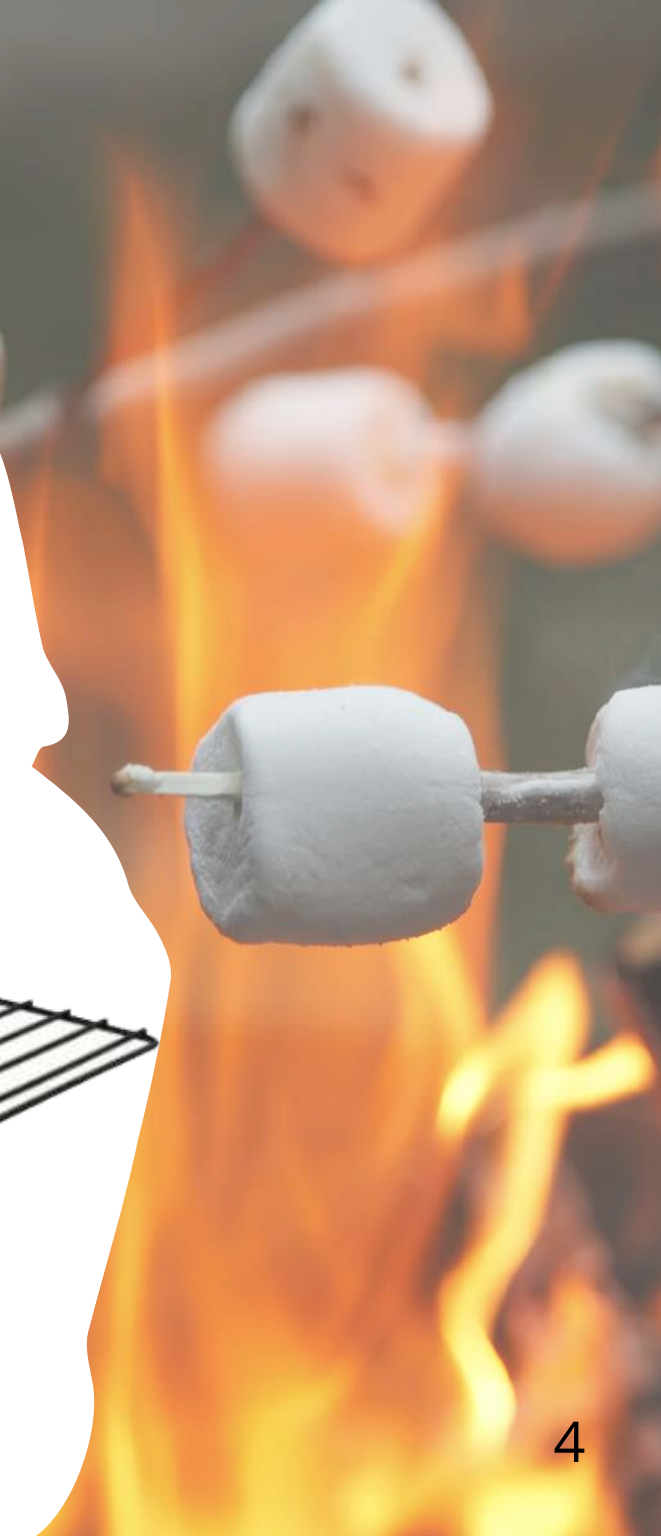
Winnerwell Woodlander



Nomad view



Camp Chef Cylinder Stove



TECHNICAL CONSIDERATIONS

DAMPERS • MATERIAL • LEGS

	METAL	LEGS	DAMPER	WINDOWS
Winnerwell	304 Stainless steel	TRI POD LEGS	DOOR DAMPER	DOOR WINDOW
Nomad View	304 Stainless steel	FOUR LEGS	DOOR DAMPER	DOOR WINDOW - EXTRA WALL WINDOW
Frontier	Steel painted black	TRI POD LEGS	NO DOOR DAMPER	NO WINDOW
Frontier Plus	Steel painted black	TRI POD LEGS	DOOR DAMPER	WINDOW
Four Dog	Welded heavy-gauge hot rolled steel construction	12" REMOVABLE FOUR LEGS	DOOR DAMPER	NO WINDOW
Camp Chef	Steel painted black	4 ADJUSTABLE LEGS	DOOR DAMPER	NO WINDOW

DO YOU NEED THE STOVE KIT FOR YOUR BELL TENT?

You'll need a stove, and the flue sections. You can pop that through your Stout Tent stove jack and be done - OR if you want a little more finished setup, you'll need the following:

SILICONE FLASHING KIT - This keeps water from coming into the tent around the stove pipe. It needs to screw into the tent, and you don't want that going through the canvas. We've thought ahead though and your Stout Tent comes with a gray fiberglass high temp insert! Screw your flashing into that piece. [Here's a video!](#)

DOES THE FLASHING KIT COME WITH THE STOVE?

- Anevay - included with the Stove + Kit (different flashings for each stove)
- Winnerwell - included in the Stove + Kit (same flashing for each stove)
- Four Dog - Does not sell this
- Camp Chef - Does not come with or sell this.



GRAY FIBERGLASS INSERT

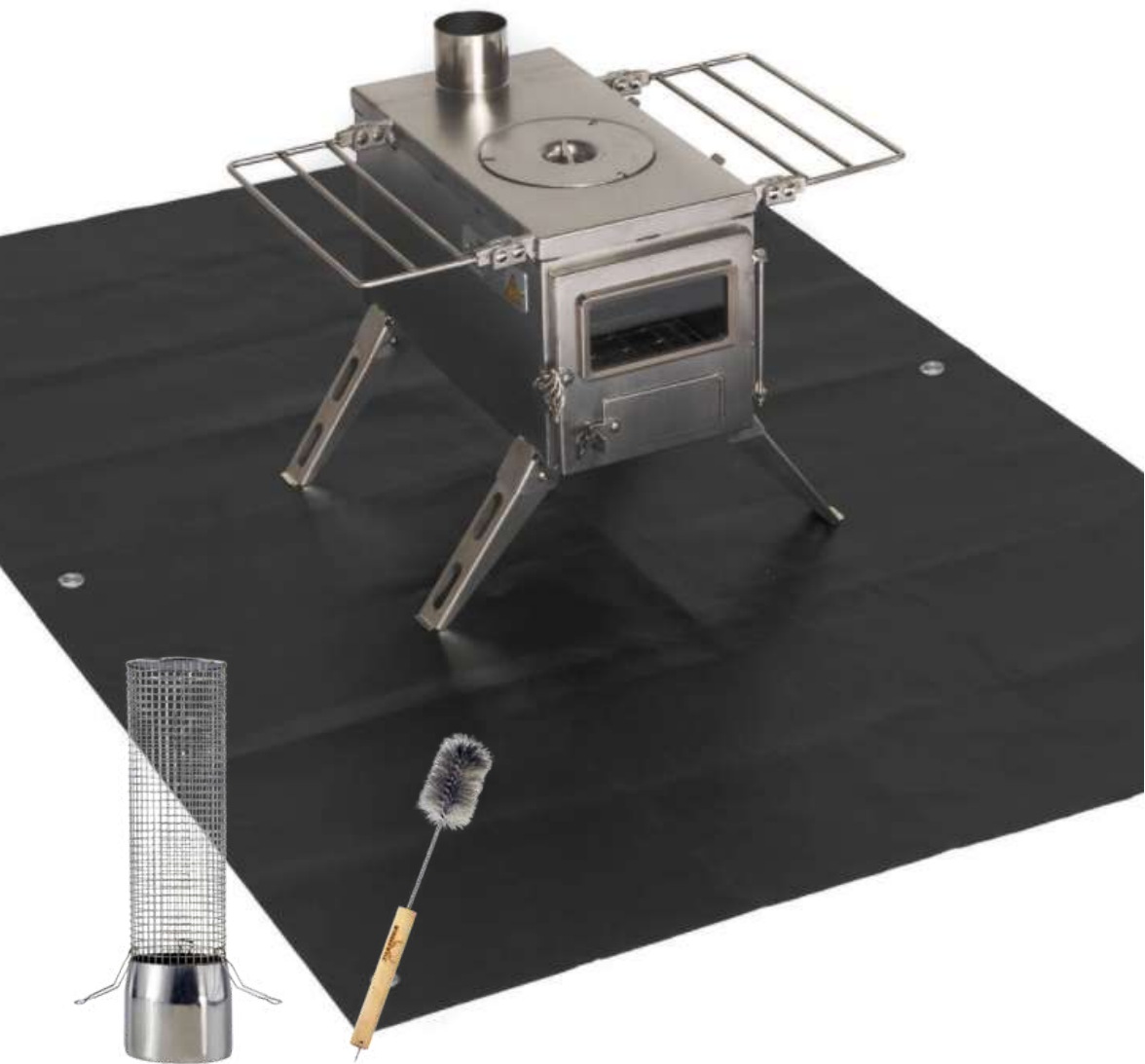




EXTRA FLUE SECTIONS - the 5M tent is 10' tall at the center pole, the 4M is 8' tall in the center, you'll need your flue section reaching at least 10' or 8', depending on the size of your tent.

- The Anevay comes with 7'/2.14 Meters of stove pipe. You'll need extra pipe sections for a 5M tent. You should be ok for the 4M tent.
- The Winnerwell stoves comes with 7'/2.14 Meters of stove pipe. You'll need the extra pipe sections for a 5M tent. You should be ok for the 4M tent.
- The Four Dog does not come with pipe sections, but they sell them in 12" sections.
- The Camp Chef Alpine stove comes with 10' of pipe. You won't need extra.

DOUBLE WALL PIPE - (only available on the Woodlander and the Nomad) adds another heat barrier which is a nice touch. We love it and recommend.



SPARK ARRESTOR

- Anevay's Frontier - must add the kit.
- Anevay's Frontier Plus - must add the kit.
- Winnerwell's Woodlander - Included with the stove purchase
- Winnerwell's Nomad - Included with the stove purchase
- Four Dog - Add it for \$12
- Camp Chef - Wire Spark Arrestor Included

HEAT MAT

You'll need to add this to each stove, or it is included in our stove kit. You could also buy a welder blanket and use that instead. Another option is to roll up the groundsheet, and use the stove on the bare ground without a mat.

WIRE PIPE CLEANING BRUSH

This is a nice thing to have and is included with the Nomad and Winnerwell stoves.

You'll want to clean your pipes after 20 hours of burn time so that you don't have a chimney fire. Creosote build up occurs naturally, and is a much larger threat if the wood you're burning is green. Use good, dry wood.

IN OUR OPINION

I included the Camp Chef Alpine stove because I've heard it brought up by customers in phone calls and emails. I wouldn't call it a portable stove, or a tent stove. I think that you can use it in your Stout Tent, but please be careful because that's a lot of HEAT. A 5" stove pipe is blasting heat. I generally think that this is too much stove for a Stout Tent.

We are also no longer carrying the Anevay stoves in our shop because we've had a hard time getting replacement parts. We also prefer to carry stoves with door dampers so that the heat levels can be adjusted inside the tent. We do like the Frontier Plus' adjustable legs. This stove is made in China, and Anevay is a company based in the UK.



OTHER NOTES

We like that you can stake the Winnerwell legs down if you're not using a groundsheet, that's nice for extra stability.

Winnerwell is a Chinese company working with a US stocker.

We like the company Four Dog because they are USA hand built stoves and provide good customer support.

Winnerwell and Nomad stoves both share the ability to use the 3.5 inch oven (slides over flue), and the water heater tank.

Alternative fuels: Please note that none of these stoves are designed to be used with pellets.





SETTING UP YOUR WOOD BURNING STOVE IN A STOUT TENT

See the operating notes below and be sure to read them before you start.



PROPERLY SET YOUR FLUE

Stout Tent's come with a 3" stove jack to accommodate your flue. The stove jack is made of ripstop fiberglass/silicone material. If your flue is larger, you may need to cut the grey fiberglass high temp insert to make it fit correctly. [See how!](#)

We specifically put this fiberglass insert in your tent so that you'd never have to cut the canvas yourself. Some manufacturers don't take this step because it is extra work, and expense. We've seen many tents structurally compromised with a hole cut through the canvas. If you bought without a stove jack, we're still happy to put a proper jack in for you, just give us a ring.

If you know the size of your flue when ordering your tent, you can request an adjustment in the notes section at checkout. We can adjust for the oval flashing (Anevay Frontier Plus) for \$50, or you can follow Jim's video and do that work yourself.

Buy the kit, but consider storing the tent without the kit for off season.

*****Make sure your stove jack flap (canvas) is secured tightly so that it won't fall on a hot stove pipe and catch on fire*****





OPERATING YOUR STOVE

Please review all of the stove manufacturer's safety and operating instructions. This information is meant to be supplemental and is not complete. Stout Tent does not assume any liability when you use a stove.

Efficient and proper use of a wood stove requires some patience and practice. When starting your fire, it's important to quickly establish a hot bed of coals to initiate a strong draw of air through the stove and up the flue. Use a good amount of small tinder when starting a fire in the stove, slowly adding larger pieces of wood. Always open the door slowly to prevent smoke spillage into your tent or shelter. **Never start a fire in your woodstove using flammable accelerates such lighter fluid.**

DO A TEST BURN OUTSIDE OF TENT

We strongly recommend operating your stove outside your tent for the first several burns to practice your fire starting technique and optimizing burn temperature and rate using the airflow controls.

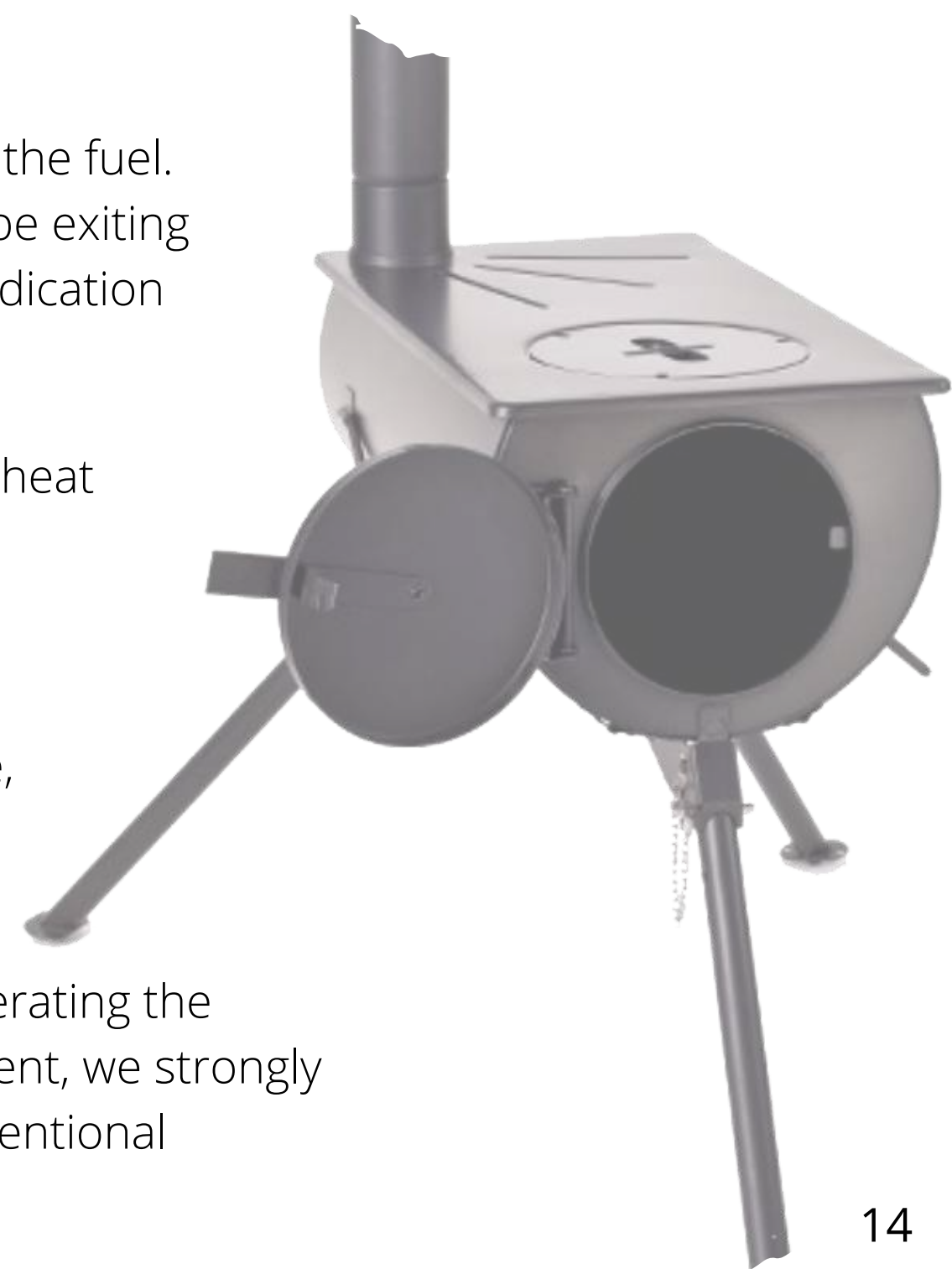
It's important that your stove burns hot enough to efficiently combust the fuel. When the stove is burning efficiently, little to no visible smoke should be exiting the chimney pipe. If the chimney is belching visible smoke, this is an indication the stove is not burning efficiently.

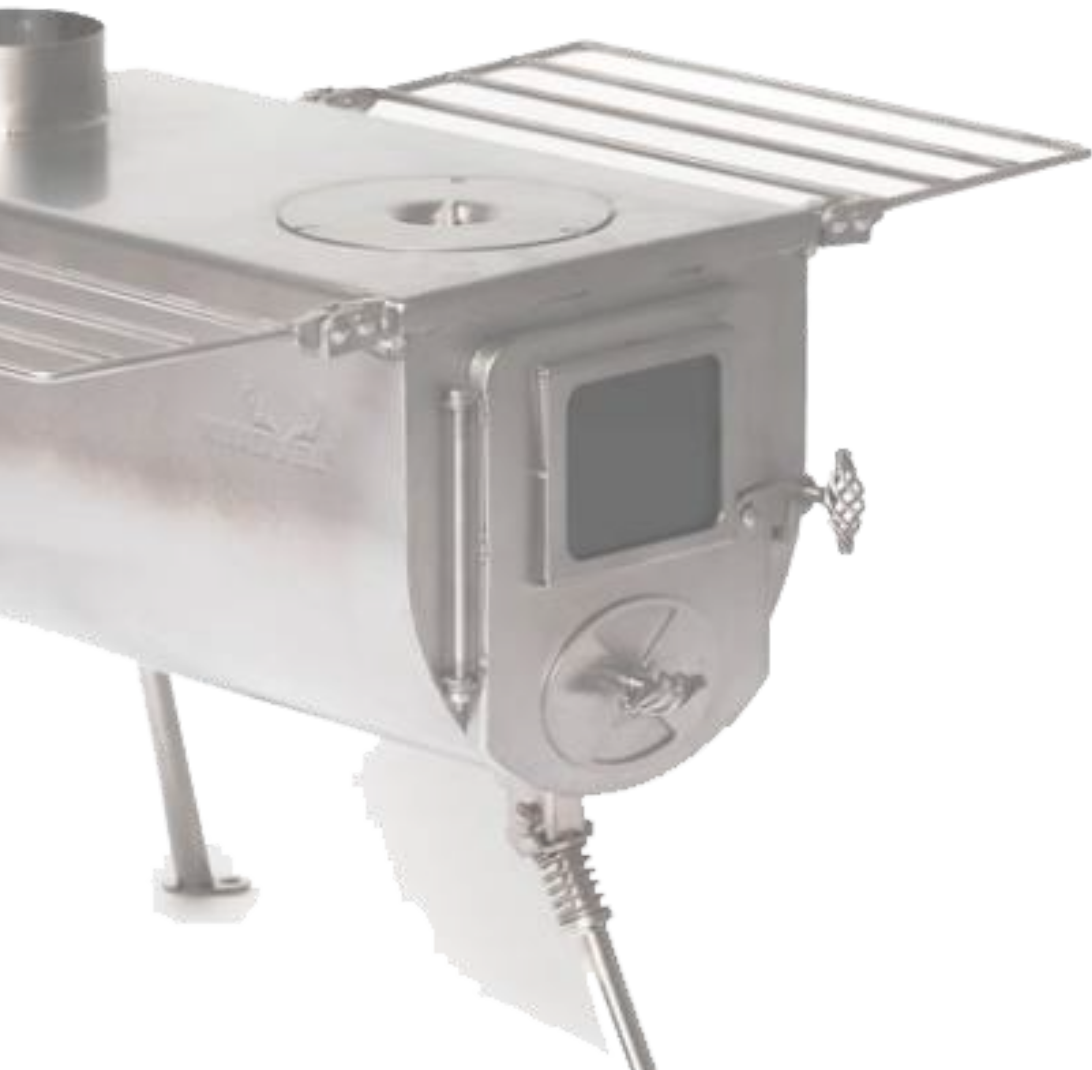
Also avoid overloading the stove with fuel as this can create excessive heat which can warp or damage the stove.

*****Never leave a woodstove burning unattended.*****

The surface of wood burning stoves become extremely hot during use, always wear leather gloves and exercise caution when operating the wood stove.

Careful supervision of children and pets is mandatory when operating the wood stove to prevent harm or injury. When children or pets are present, we strongly recommend the use of fence panels or a stove guard to prevent unintentional contact with the stove.





Only burn clean, dry, seasoned firewood. Burning green wood can result in carbon monoxide which is hazardous to health as well as increase the build up of creosote in the flue pipe which can create the risk of chimney fire.

Clean the flue regularly (approx. every 20 hours of burn time) to avoid excessive creosote build up which can inhibit airflow and create the risk of chimney fire. We recommend a Winnerwell Pipe Brush for cleaning the flue.

Keep a knife on you in case you need to cut your way out of a tent that is on fire.

Don't cook greasy food inside your tent. High grease (like bacon) can be a grease fire hazard.

Keep a fire extinguisher and a carbon monoxide alarm in your tent.



While we at Stout Tent do our best to educate customers to the best of our knowledge, when you use a woodstove inside your tent, you assume all responsibility for the safe use of the woodstove.